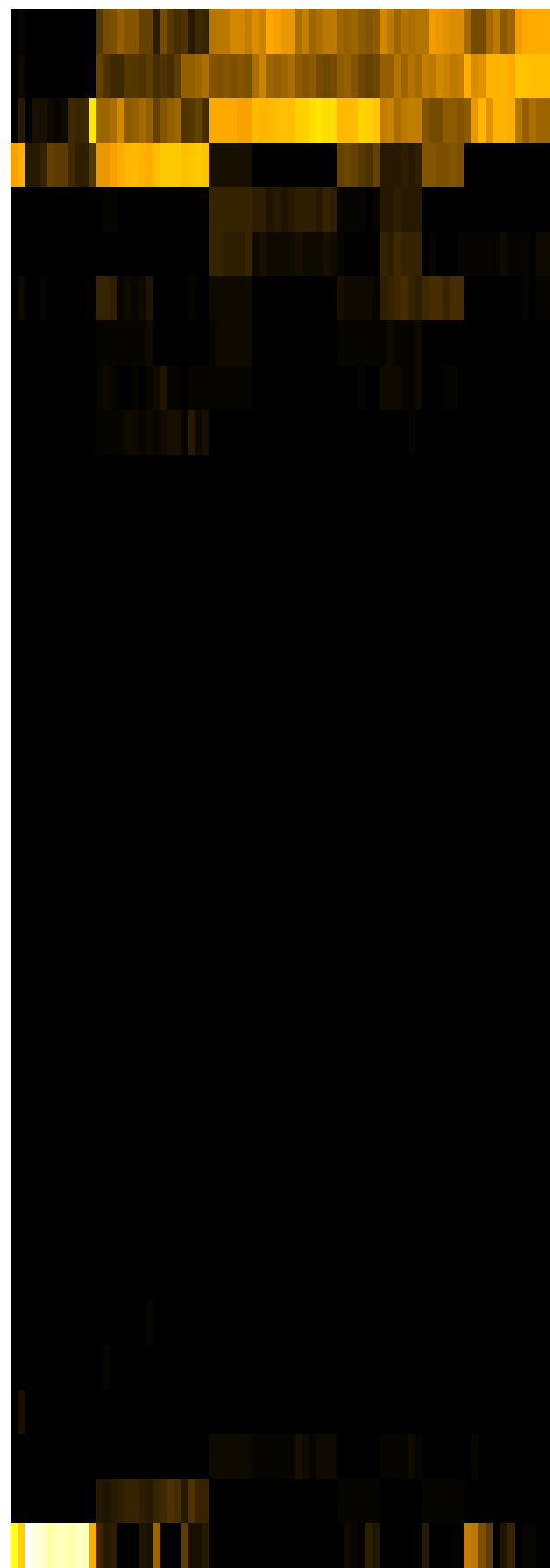
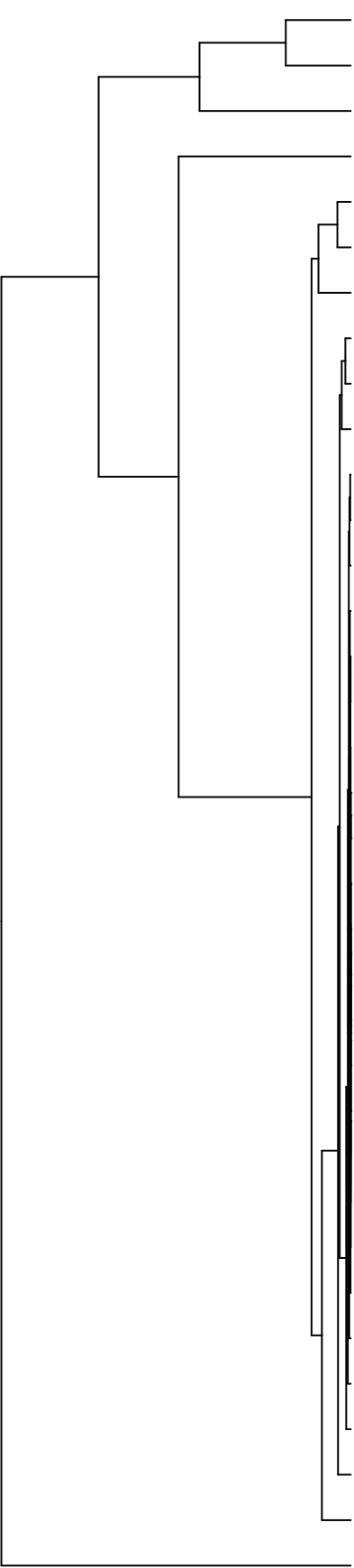


Group005  
 Baseline  
 Final G -PMA



- Pasteurellaceae
- Veillonellaceae
- Neisseriaceae
- Streptococcaceae
- Campylobacteraceae
- Porphyromonadaceae
- Fusobacteriaceae
- Gemellaceae
- Micrococcaceae
- Actinomycetaceae
- Erysipelotrichaceae
- Saccharibacteria\_(TM7)\_[F-1]
- Lachnospiraceae
- Burkholderiaceae
- Atopobiaceae
- Absconditabacteria\_(SR1)\_[F-1]
- Flavobacteriaceae
- Sphingomonadaceae
- Moraxellaceae
- Mycobacteriaceae
- Microbacteriaceae
- Yersiniaceae
- Hymenobacteraceae
- Saccharibacteria\_(TM7)\_[F-2]
- Rhizobiaceae
- Propionibacteriaceae
- Phyllobacteriaceae
- Weeksellaceae
- Comamonadaceae
- Pseudomonadaceae
- Leptotrichiaceae
- Staphylococcaceae
- Prevotellaceae
- Carnobacteriaceae
- Enterobacteriaceae

- F28914.S441
- F28914.S443
- F28914.S396
- F28914.S444
- F28914.S446
- F28914.S445
- F28914.S123
- F28914.S122
- F28914.S128
- F28914.S126
- F28914.S283
- F28914.S282
- F28914.S285
- F28914.S287
- F28914.S041
- F28914.S037
- F28914.S042
- F28914.S070
- F28914.S072
- F28914.S071
- F28914.S047
- F28914.S043
- F28914.S048
- F28914.S029
- F28914.S026
- F28914.S027
- F28914.S066
- F28914.S061
- F28914.S063
- F28914.S053
- F28914.S051
- F28914.S054
- F28914.S056
- F28914.S031
- F28914.S035
- F28914.S032
- F28914.S058
- F28914.S059

Family

Samples